

Line

120 VP 1/8"

Valvole a comando pneumatico Pneumatically operated Valves

Valvole a doppio comando pneumatico 3/2 bistabili
3/2 Double pneumatic pilot valves

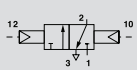
Dati Tecnici

Pressione d'esercizio: 0÷10 Bar (0÷1,00 MPa)
Pressione di pilotaggio: 0,5÷10 Bar (0,05÷1,00 MPa)
Peso: 0,095 Kg

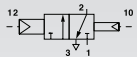
Technical data

Working pressure: 0÷10 Bar (0÷1,00 MPa)
Operating pressure: 0,5÷10 Bar (0,05÷1,00 MPa)
Weight: 0,095 Kg

Codici di ordinazione Order codes



CODE **REF.**
1202223003 VP 1/8" 22 3 PN BS OO P



1202223004 VP 1/8" 22 3 PN DF OO P

