

120 VM 1/8"

Valvole a comando manuale Manually operated Valves

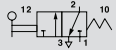
Dati Tecnici

Pressione d'esercizio: 0÷10 Bar (0÷1,00 MPa)
Peso: 0,094 Kg

Technical data

Working pressure: 0÷10 Bar (0÷1,00 MPa)
Weight: 0,094 Kg

Codici di ordinazione Order codes



CODE	REF.
1202323004	VM 1/8" 22 3 LV ML NC P



1202323005	VM 1/8" 22 3 LV BS OO P
------------	-------------------------

Valvole a leva assiale 3/2 3/2 Axial lever valves

