

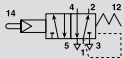
Valvole a comando meccanico
Mechanically operated Valves

Dati Tecnici

Pressione d'esercizio: 1=10 Bar (0,10±1,00 MPa)
 Forza d'azionamento (a 6 Bar): 9 N
 Peso: 0,082 Kg

Technical data

Working pressure: 1=10 Bar (0,10±1,00 MPa)
 Thrust force (6 Bar): 9 N
 Weight: 0,082 Kg

Codici di ordinazione
Order codes

CODE	REF.
1202525004	ME 1/8" 22 5 PO PM OO P

Valvola a puntale passa-parete servopilotato 5/2
5/2 Sensible through-wall pushrod valve