

Line

120 ME 1/8"

Valvole a comando meccanico Mechanically operated Valves

Dati Tecnici

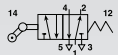
Pressione d'esercizio: 0-10 Bar (0±1,00 MPa)
Forza d'azionamento (a 6 Bar): 16 N
Peso: 0,098 Kg

Technical data

Working pressure: 0-10 Bar (0±1,00 MPa)
Thrust force (6 Bar): 16 N
Weight: 0,098 Kg

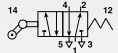
Codici di ordinazione Order codes

Versione con rullo in tecnopolimero.
Version with technopolymer roller.



CODE **REF.**
1202425003 ME 1/8" 22 5 RU ML OO P

Versione con cuscinetto a sfere.
Version with ball bearing.



CODE **REF.**
1202425007 ME 1/8" 22 5 RUC ML OO P

(Per disegni aggiornati della versione "RUC" contattare U.T. Aircomp)
(For up-to-date "RUC" version drawing, contact Aircomp technical dept)

Valvola con leva a rullo unidirezionale 5/2
5/2 Unidirectional roller lever valve

