

Line

120 ME 1/8"

Valvole a comando meccanico Mechanically operated Valves

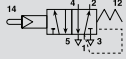
Dati Tecnici

Pressione d'esercizio: 1÷10 Bar (0,10÷1,00 MPa)
Peso: 0,087 Kg

Technical data

Working pressure: 1÷10 Bar (0,10÷1,00 MPa)
Weight: 0,087 Kg

Codici di ordinazione Order codes



CODE	REF.
1202525006	ME 1/8" 22 5 LS PM OO P

Valvola con leva a tasto servopilotata 5/2
5/2 Sensible push lever valve

