

Line

120 ME 1/8"

Valvole a comando meccanico Mechanically operated Valves

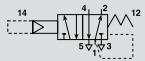
Dati Tecnici

Pressione d'esercizio: 1÷10 Bar (0,10÷1,00 MPa)
Peso: 0,085 Kg

Technical data

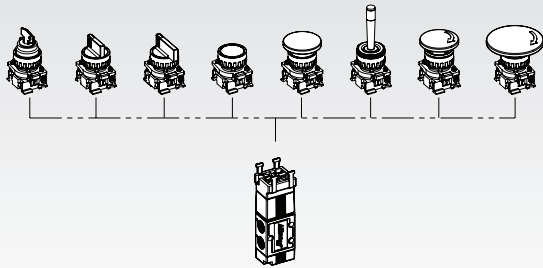
Working pressure: 1÷10 Bar (0,10÷1,00 MPa)
Weight: 0,085 Kg

Codici di ordinazione Order codes

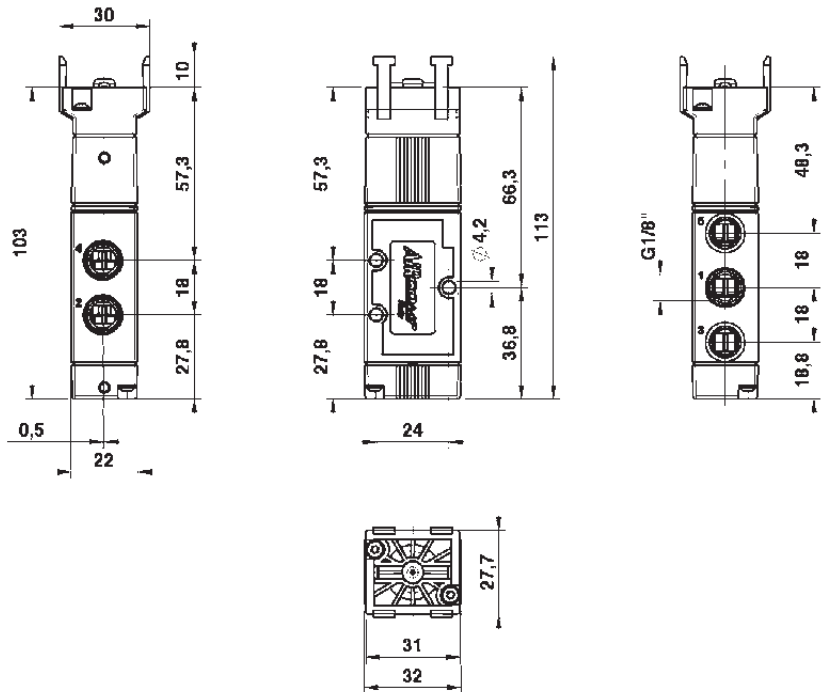


CODE	REF.
1202525005	ME 1/8" 22 5 PB PM OO P

Configurazioni disponibili (*) Available configurations (*)



Valvola 5/2 predisposta per comandi a pannello
5/2 Valve for panel mounting actuators



(*) Per la consultazione dei codici e delle caratteristiche degli attuatori vedi pag. 84.

(*) For actuators codes and features, refer to page 84.