

## Valvole a comando pneumatico Pneumatically operated Valves

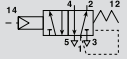
### Dati Tecnici

Pressione d'esercizio: 0÷10 Bar (0÷1,00 MPa)  
Pressione di pilotaggio: 1÷10 Bar (0,10÷1,00 MPa)  
Peso: 0,137 Kg

### Technical data

Working pressure: 0÷10 Bar (0÷1,00 MPa)  
Operating pressure: 1÷10 Bar (0,10÷1,00 MPa)  
Weight: 0,137 Kg

### Codici di ordinazione Order codes



CODE	REF.
1272235001	VPR 1/4" 22 5 PN PM OO M
1272225001	VPR 1/8" 22 5 PN PM OO M

Valvola a comando pneumatico 5/2  
5/2 Single pneumatic pilot valve

