

# Line

# 127 MER 1/4"

## Valvole a comando meccanico

## Mechanically operated Valves

### Dati Tecnici

Pressione d'esercizio: 0÷10 Bar (0÷1,00 MPa)  
Forza d'azionamento (a 6 Bar): 16 N  
Peso: 0,145 Kg

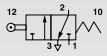
### Technical data

Working pressure: 0÷10 Bar (0÷1,00 MPa)  
Thrust force (6 Bar): 16 N  
Weight: 0,145 Kg

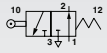
### Codici di ordinazione

### Order codes

Versione con rullo in tecnopolimero.  
Version with technopolymer roller.

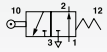


CODE	REF.
1272433003	MER 1/4" 22 3 RL ML NC M

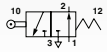


1272433004	MER 1/4" 22 3 RL ML NO M
------------	--------------------------

Versione con cuscinetto a sfere.  
Version with ball bearing.



CODE	REF.
1272433007	MER 1/4" 22 3 RLC ML NC M



1272433008	MER 1/4" 22 3 RLC ML NO M
------------	---------------------------

(Per disegni aggiornati della versione "RLC" contattare U.T. Aircomp)  
(For up-to-date "RLC" version drawing, contact Aircomp technical dept)

Valvole con leva a rullo 3/2 NC-NO  
3/2 NC-NO Roller lever valves

