

Line

127 MER 1/4"

Valvole a comando meccanico

Mechanically operated Valves

Dati Tecnici

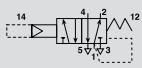
Pressione d'esercizio: 1÷10 Bar (0,10÷1,00 MPa)
Peso: 0,145 Kg

Technical data

Working pressure: 1÷10 Bar (0,10÷1,00 MPa)
Weight: 0,145 Kg

Codici di ordinazione

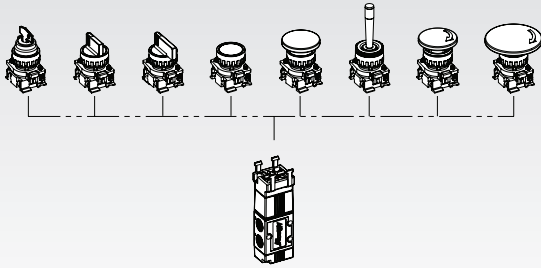
Order codes



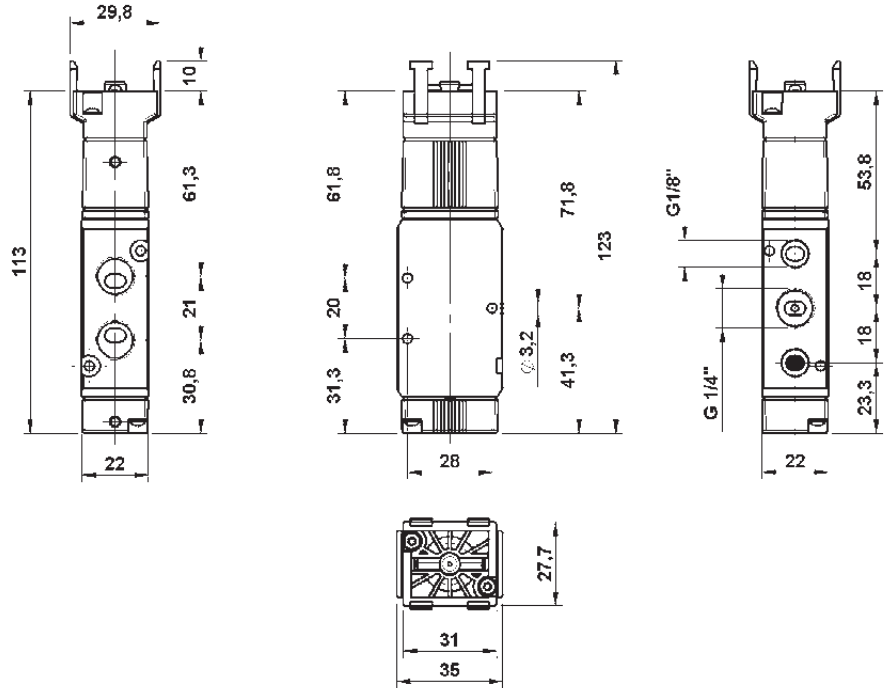
| CODE | REF. |
|------------|--------------------------|
| 1272535005 | MER 1/4" 22 5 PB PM OO M |

Configurazioni disponibili (*)

Available configurations (*)



Valvola 5/2 predisposta per comandi a pannello
5/2 Valve for panel mounting actuators



(*) Per la consultazione dei codici e delle caratteristiche degli attuatori vedi pag. 84.
(*) For actuators codes and features, refer to page 84.