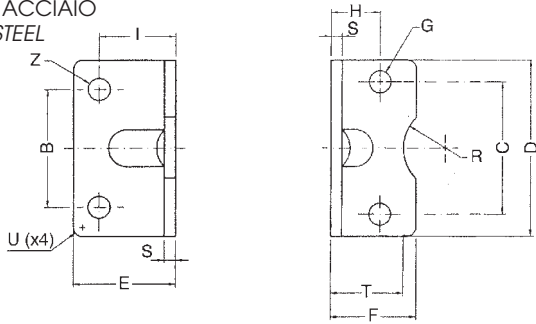


**MATERIALE: ACCIAIO**  
**MATERIAL: STEEL**



**QCP**



**PIEDINO BASSO - LOW-RISE PEDESTAL**

Ø mm.	C	B	D	E	F	G	H	I	S	T	R	U	Z
<b>12 - 16</b>	18	18	30	17.5	17.5	4.4	13	13	3	15	9	2	5.5
<b>20</b>	22	22	36	22	22	5.4	16	16	4	17	10	2	6.6
<b>25</b>	26	26	40	22	23	5.4	17	16	4	19	11	2	6.6