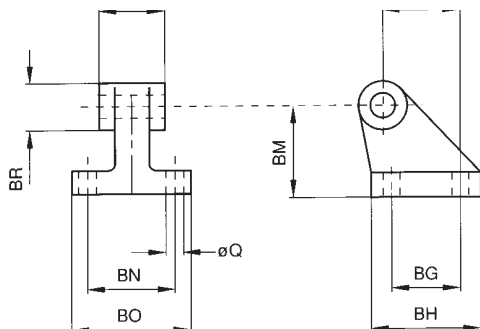


MATERIALE: ALLUMINIO
MATERIAL: ALUMINIUM



VAS

ARTICOLAZIONE A SQUADRA CON BOCCOLE AUTOLUBRIFICANTI - SQUARE JOINT SELF-LUBRICATING

Ø mm.	Q	BG	BH	BI	BM	BN	BO	BQ	BR
32	6.6	18	31	21	32	38	51	26	20
40	6.6	22	35	24	36	41	54	28	22
50	9	30	45	33	45	50	65	32	26
63	9	35	50	37	50	52	67	40	30
80	11	40	60	47	63	66	86	50	30
100	11	50	70	55	71	76	96	60	38
125	14	60	90	70	90	94	124	70	45