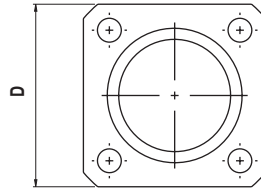
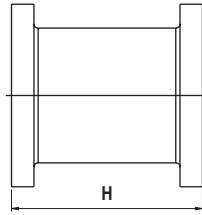


*Componenti di fissaggio | Mounting Accessories*

MATERIALE: ALLUMINIO  
MATERIAL: ALUMINIUM



**VFT**

**FLANGIA PER CILINDRO CONTRAPPOSTO - JOINING FLANGE**

<b>∅ mm.</b>	<b>H</b>	<b>D</b>
<b>32</b>	55	45
<b>40</b>	55	52
<b>50</b>	68	65
<b>63</b>	68	75
<b>80</b>	92	95
<b>100</b>	92	115
<b>125</b>	120	140