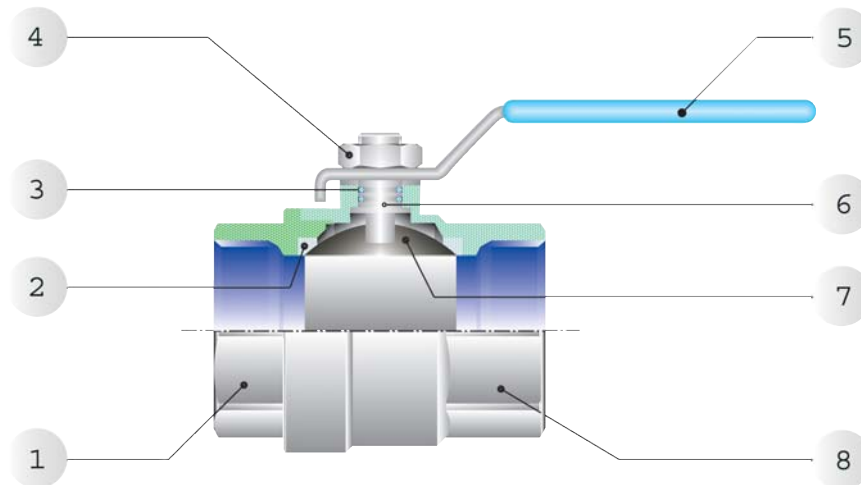


Valvole a Sfera / Ball Valves

Le valvole a sfera a passaggio totale sono valvole di intercettazione del tipo ON-OFF, adatte a grandi portate. L'apertura e la chiusura avvengono manualmente agendo sull'alberino di comando della sfera con l'apposita maniglia o mediante una chiave.

The ball valves full port are shutoff valves type ON-OFF, suitable for high flow rate. The opening and closing functions are made by hand, acting on the control spindle of the ball with the handle, or operated with a spanner.

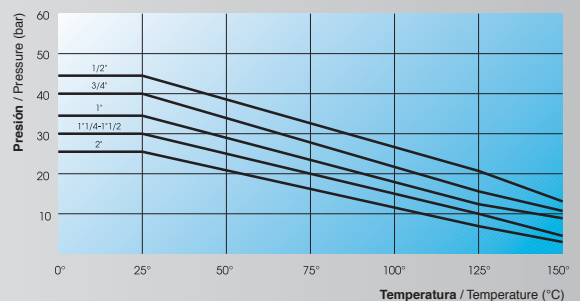


Scheda Materiali / Specifications

- 1 Raccordo in Ottone Nichelato
- 2 Guarnizione sede sfera in PTFE
- 3 Guarnizione asta in NBR
- 4 Dado per leva in Acciaio
- 5 Leva di manovra in acciaio plastificato
- 6 Asta di manovra in ottone nichelato
- 7 Sfera in ottone cromato
- 8 Corpo in ottone nichelato

- 1 Nickel-plated Brass Fitting
- 2 PTFE Seats
- 3 NBR Stem Seal
- 4 Steel Nut for lever
- 5 Steel plastified Lever handle
- 6 Nickel-plated Brass Stem
- 7 Chrome Nickel-plated Brass Ball
- 8 Nickel-plated Brass Body

**** DIAGRAMMA PRESSIONE-TEMPERATURA**
PRESSURE-TEMPERATURE RATINGS DIAGRAM



Filettature / Thread

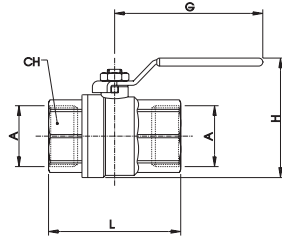
Gas Cilindrica conforme ISO 228 classe A.
Parallel gas in conformity with ISO 228 class A.

Tubi di collegamento / Connections tube

Tubi metallici in genere, raccorderia varia.
Tubes made in metal in general and various fittings.

6068

VALVOLA A SFERA PER GAS, FEMMINA G ISO 228 - FEMMINA G ISO 228 - GAS BALL VALVE, FEMALE G ISO 228 - FEMALE G ISO 228



A	DN	CH	L	G	H	Conf. Pack.
1/2	15	26	59	88	58	10
3/4	20	32	67.3	88	65	10
1"	25	40	77.5	90	74	5
1"1/4	32	49	92	90	85	2
1"1/2	40	55	101.5	134	100	1
2"	50	68	122.5	134	116.5	1

ART.6068:

Dal DN15 al DN50:

Fluidi: 1° e 2° Famiglia di gas a media pressione e 3° famiglia di gas a bassa pressione.

OMOLOGATE EN 331 fino a pressione Max: 5 bar

From DN 15 to 50:

Fluids: 1st and 2nd gas family to medium pressure and 3th gas family to low pressure OMOLOGATED EN331 to Max pressure: 5bar