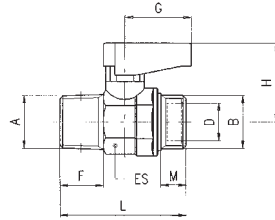


# 6330

MASCHIO CONICO R ISO 7 - MASCHIO CILINDRICO GA ISO 228 - TAPER MALE R ISO 7 - PARALLEL MALE GA ISO 228



A	B	DN	ES	D	F	M	L	G	H	Conf. Pack.
1/8	- 1/8	5.5	14-15	6.2	7.4	7	33.5	19	21	25
1/8	- 1/4	5.5	14-15	8.2	7.4	8	33.5	19	21	25
1/4	- 1/8	5.5	14-15	6.2	11	7	38	19	21	25
1/4	- 1/4	5.5	14-15	8.2	11	8	38	19	21	25
3/8	- 3/8	8	18-19	10.2	11.4	9	41.5	19	22	10
1/2	- 1/2	10	22-23	15.2	15	10	49	26	30.5	10
3/4	- 3/4	14	28-30	18.2	16.3	12	55.5	26	33	5

