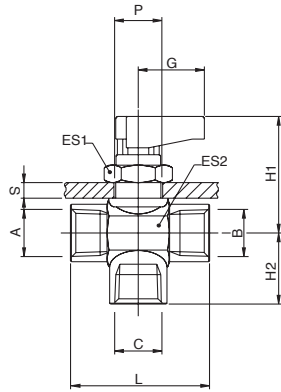


6700

VALVOLA A TRE VIE FEMMINA G ISO 228 - 3 WAYS FEMALE G ISO 228



NO GAS



A	B	C	(DN)	ES1	ES2	L	G	H1	H2	SMax	P	Conf. Pack.
1/8-1/8-1/8	5	17	17	35	19	33.5	15.5	4.5	14.5	25		
1/4-1/4-1/4	5	17	17	37	19	33.5	17.5	4.5	14.5	25		
3/8-3/8-3/8	7	17	21	42	19	35	19.5	4.5	14.5	10		

