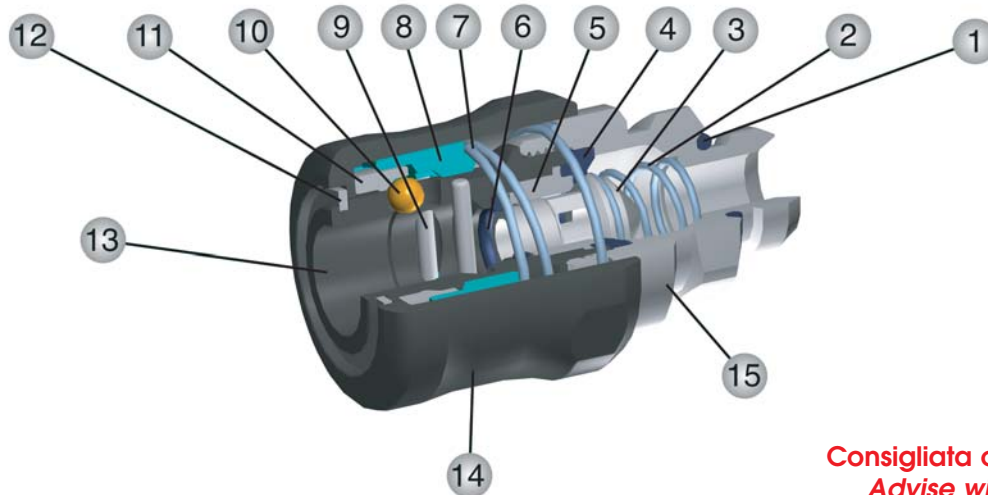


Caratteristiche Tecniche | Technical Characteristics



**Consigliata con innesti AVP
Advise with AVP plug**

Materiali e Componenti | Component Parts and Materials

1 Guarnizione O-Ring in NBR 70	1 NBR 70 O-ring
2 Molla contrasto otturatore in acciaio INOX AISI 302	2 INOX steel AISI 302 shutter thrust spring
3 Otturatore in ottone nichelato	3 Nickel-plated brass shutter
4 Guarnizione O-Ring in NBR 70	4 NBR seal
5 Anello in ottone nichelato	5 Nickel-plated brass ring
6 Guarnizione O-Ring in NBR 70	6 NBR 70 O-ring
7 Molla contrasto ghiera in acciaio INOX AISI 302	7 INOX steel AISI 302 ring nut thrust spring
8 Anello trascinamento rullini in tecnopolimero	8 Technopolymeric trailing pins ring
9 Spina in acciaio INOX AISI 420	9 INOX steel AISI 420 pin
10 Sfera in acciaio INOX AISI 420	10 INOX steel AISI 420 ball
11 Anello contenimento sfera in acciaio INOX AISI 303	11 INOX steel AISI 303 restraining balls ring
12 Seeger in acciaio INOX AISI 302	12 INOX steel AISI 302 seeger
13 Corpo in tecnopolimero	13 Technopolymeric Body
14 Ghiera in tecnopolimero	14 Technopolymeric sleeve
15 Attacco terminale in ottone nichelato	15 Nickel-plated brass coupling back part

Pressioni | Pressures

Pressione minima / Minimum pressure: **-0.99 bar** (-0.099 MPa)
 Pressione massima / Maximum pressure: **15 bar** (1.5 MPa)

Temperature | Temperatures

Temperatura minima / Minimum temperature: **-18 °C**
 Temperatura massima / Maximum temperature: **+80 °C**

Filettature | Threads

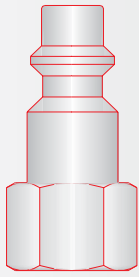
Gas cilindrica conforme ISO 228 Classe A / Parallel gas in conformity with ISO 228 Class A.

Tubi di collegamento | Connection Tubes

Tubi in materiale plastico:
 PA6, PA11, PA12, Polietilene, *Poliuretano; ecc.
 *Per tubi in Poliuretano é consigliata una durezza di 98 shore.
 Plastic tubes:
 PA6, PA11, PA12, Polyethylene, *Polyurethane, ecc.
 *For Polyurethane hoses it is required a minimum hardness of 98 shore.

Fluidi compatibili | Fluids

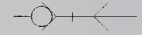
Aria compressa / Compressed air.



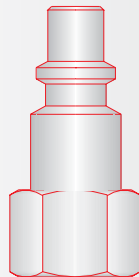
B-12
1:1

620 SERIES
UNI ISO 6150 B-12

DN 5,5 mm



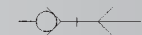
Pressione d'esercizio / Working pressure: 0 - 15 bar



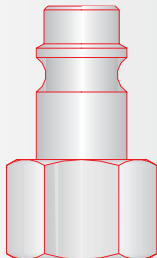
ITALIAN
1:1

650 SERIES
ITALIAN

DN 5 mm



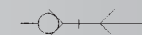
Pressione d'esercizio / Working pressure: 0 - 15 bar



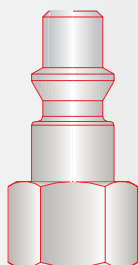
EUROPEAN
1:1

660 SERIES
EUROPEAN

DN 7,5 mm



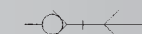
Pressione d'esercizio / Working pressure: 0 - 15 bar



SWEDISH
1:1

670 SERIES
SWEDISH

DN 5,5 mm



Pressione d'esercizio / Working pressure: 0 - 15 bar